

SOCIALLY-DISTANCED SELFIE SCAVENGER HUNT CLUE GUIDE



Use this guide to follow the clues and check off what you've solved so far. Remember masks!



GREAT OUTDOORS

Breathe the fresh air and search for hidden nature gems around the city.



- CLUE 1:** Did you know Worcester has waterfalls? The Greater Worcester Land Trust manages these beautiful cascading waters, right in our backyard! You can't swim in them, but you can certainly enjoy the view. Snap a selfie to prove you were there.

DO YOU KNOW WHERE THIS IS? _____

- CLUE 2:** At this well-known Worcester beach, you can take sailing and rowing lessons, rent kayaks and stand-up paddle boards, have a picnic, swim, sun yourself on the beach, and enjoy the sweeping views of the artfully-designed Kenneth F. Burns Memorial Bridge.

DO YOU KNOW WHERE THIS IS? _____

- CLUE 3:** Where in Worcester can you see alpacas, chickens, goats, llamas, mini-horses, pigs, and sheep all in one place? In addition, this special spot will please the whole family with a golf course, pond for fishing, and areas for handball, baseball, softball, soccer, football, a playground, picnic areas, and a skate park.

DO YOU KNOW WHERE THIS IS? _____

- CLUE 4:** This park, originally called the "New Common," was one of the first US expenditures of public funds to purchase land for use as a public park. Shortly after its 1854 purchase, the park was redesigned by the same firm that designed Central Park in NYC. Hosting summer concerts and numerous art installations, its most recognizable landmark is the picturesque red bridge that crosses visitors over the pond.

DO YOU KNOW WHERE THIS IS? _____



IT'S ALL ABOUT YOU (AND US)
 Explore the history of the WHA
 and some favorite Woo locations!



- CLUE 5:** Built in 1949 and containing 202 apartment units, this oldest WHA property is situated on the shore of Coes Pond and served as the backdrop for famous Worcester-born rapper, Joyner Lucas' music video "Broke and Stupid" in 2019.

DO YOU KNOW WHERE THIS IS? _____

- CLUE 6:** This "new-to-us" headquarter WHA building is not occupied yet, but work is well underway towards transforming this former medical office into a space that will soon bring most of us together under one roof. Enjoy the view of Lake Quinsigamond behind you!

DO YOU KNOW WHERE THIS IS? _____

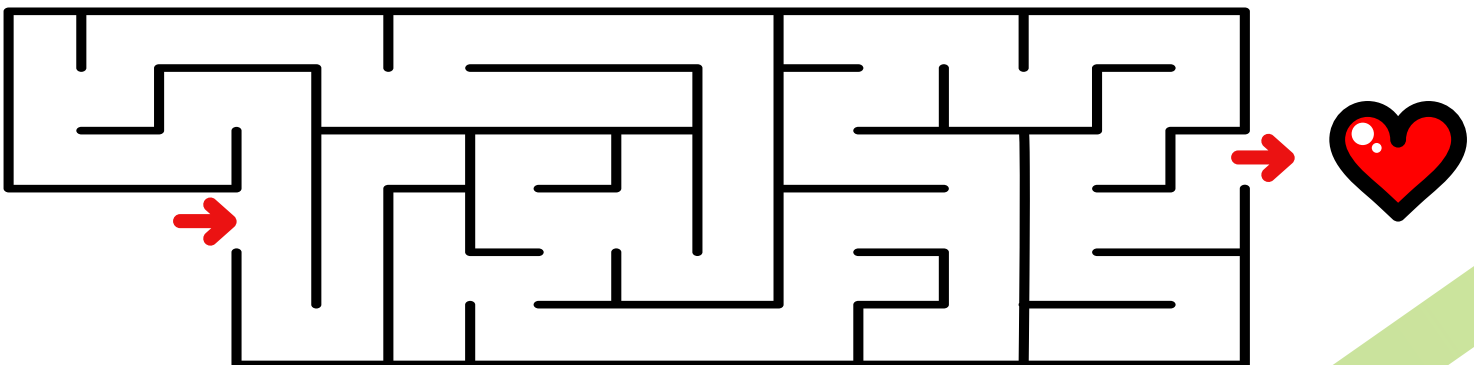
- CLUE 7:** Show us where you are working or your favorite spot to get work done! Whether it's in an office, a cubicle, a delivery van, or another area, snap a selfie of you in your workspace. Don't forget your mask!

DO YOU KNOW WHERE THIS IS? _____

- CLUE 8:** With the COVID crisis hitting the restaurant industry particularly hard, we'd like to support local business and have you snap a selfie in front of your favorite local eatery. Whether it's breakfast, lunch, dinner, coffee, a bar, or a snack, what Worcester spot have you missed most during the shutdown?

DO YOU KNOW WHERE THIS IS? _____

Kids' car activity - Get to the Heart of Housing!





FOOD & DRINK

Snap a shot in front of Worcester-famous food and drink spots. Grab a treat too!

- CLUE 9:** Who doesn't love a cold snack on a hot summer's day? Worcester is lucky enough to be home to a wide array of spots for ice cream, frozen yogurt, and other sweet treats with enough flavors to satisfy even the pickiest eaters. Choose one and snap a selfie, include your treat if you rewarded yourself with one!

DO YOU KNOW WHERE THIS IS? _____

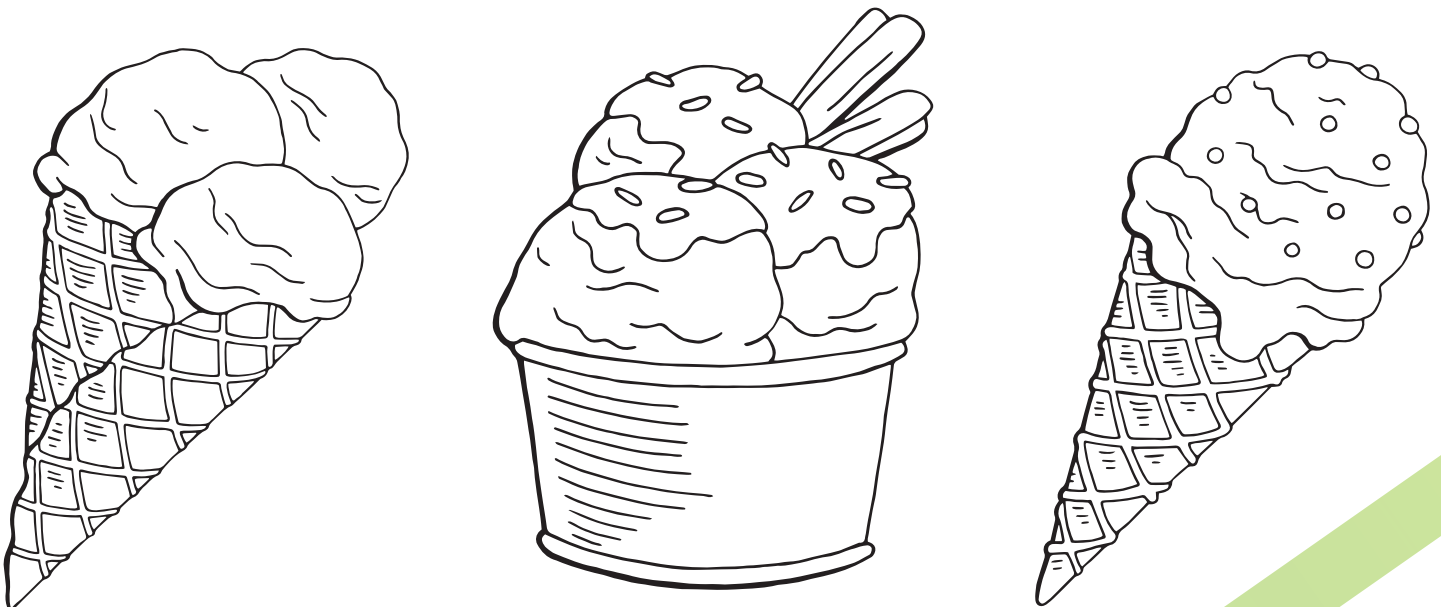
- CLUE 10:** The Worcester Lunch Car Company paved the way for the diner car restaurant trend in the early 1900s. Serving hungry patrons since 1948, this famous eatery inside of car #812 has won awards year after year for slinging some of the best and most unique breakfast creations in the city.

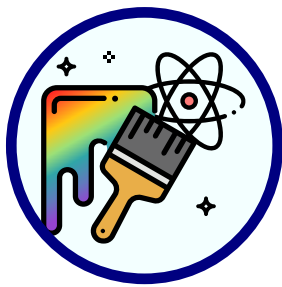
DO YOU KNOW WHERE THIS IS? _____

- CLUE 11:** This classic Worcester lunch counter has existed since 1918, but it wasn't until 1938, when the restaurant was renovated into its current, art deco style and topped with a giant neon sign, that a legacy was born. Whether you order your hot dogs "up," with "the works," or with a side of chocolate milk, don't forget to carve your name into the booth!

DO YOU KNOW WHERE THIS IS? _____

Kids' car activity - Color in your favorite treats!





ARTS & ENTERTAINMENT

Find Worcester’s creative, artistic, and fun spaces across the city.



- CLUE 12:** Since its inception in 2016, this international art festival has brought over 130 pieces of public “street” art to Worcester, including four on WHA property. Choose your favorite from the many spread across the city, and snap a selfie in front of it.

DO YOU KNOW WHERE THIS IS? _____

- CLUE 13:** Established over 30 years ago, this family-friendly entertainment venue is keeping one of America’s favorite pastimes alive and introducing new generations to the joys of roller skating. Roll around, enjoy sound and light shows, family nights, birthday parties, and a full snack bar.

DO YOU KNOW WHERE THIS IS? _____

- CLUE 14:** There is much debate over whether or not Worcester was the birthplace of candlepin bowling, but we’ll go ahead and take it. During the game’s heyday, there were between 25 and 40 active lanes in the city. Now, there is only one. Find it! If it’s open, check it out - its lanes and décor have been so well-preserved that it’s like taking a step back in time.

DO YOU KNOW WHERE THIS IS? _____

- CLUE 15:** This science and nature museum features several permanent and traveling exhibits, a planetarium, a narrow-gauge train pulled by a scale model of an 1860s steam engine, nature trails, and a variety of wildlife including mountain lions, set on a 45 acre campus.

DO YOU KNOW WHERE THIS IS? _____

- CLUE 16:** With magnificent works of art from all over the world, dating back to 3000 BC, this Worcester museum is home to one of the finest Roman mosaics in the US, a major collection of Japanese prints, a medieval “chapter house,” and the second largest collection of arms and armor in the Americas. Inside, you’ll find paintings by Monet and Gauguin, a conservation lab, a café, and a year-round studio art program for adults and youth.

DO YOU KNOW WHERE THIS IS? _____



ARTS & ENTERTAINMENT

Find Worcester's creative, artistic, and fun spaces across the city.



- CLUE 17:** This legendary live music venue and diner was built in 1930 and is listed on the National Register of Historic Places. Consisting of a Worcester Lunch Car connected to a 19th century, two-story brick building that was originally a fire station, the venue's diverse live entertainment includes famous music acts, "Metal Thursdays" and poetry readings. In the summer, movies are projected on the outside patio, and vintage auto and motorcycle shows are hosted. The award-winning burgers and chili are served until 12:30 a.m. every night of the week!

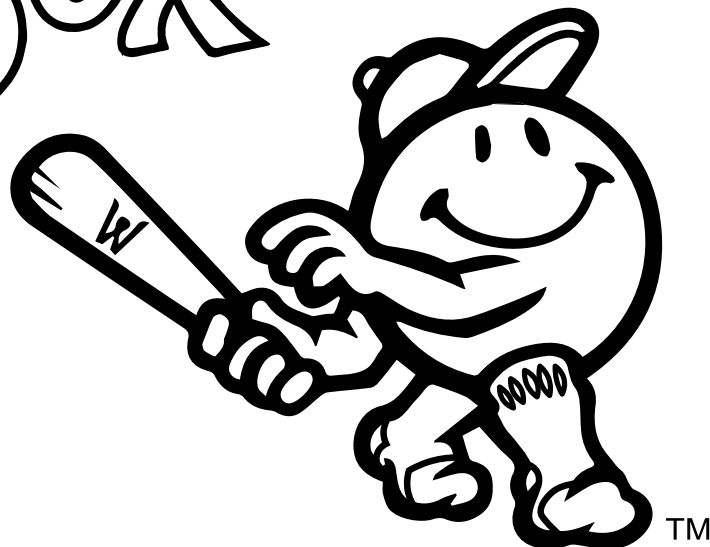
DO YOU KNOW WHERE THIS IS? _____

- CLUE 18:** Adorned with shimmering crystal chandeliers, marble columns, mirrored walls, and gilded ornamentation, this 2,300 seat entertainment venue hosts nationally-known entertainers, Broadway performances, and community shows, and has recently added an education center with classes in acting, vocal-training, theater lighting, costume and set design.

DO YOU KNOW WHERE THIS IS? _____

Kids' car activity - Color in Worcester Woo Sox!

Woo Sox



TM



HISTORY & CULTURE

Travel to the landmarks and immerse yourself in Worcester’s past to present!



- CLUE 19:** Built in the shadow of Route 146 and overlooking the Blackstone Canal, this visitor’s center is filled with interactive educational exhibits about the rich industrial history of the Blackstone River Valley. This modern, eco-friendly, sustainably built example of modern architecture is a great starting point for a walk or bike ride over the canal.

DO YOU KNOW WHERE THIS IS? _____

- CLUE 20:** Situated on “the Common” and fronting Main Street, this renaissance-inspired building serves to provide official government operations for the City of Worcester. Opening in April of 1898, it features a clock tower and a grand, double-sided staircase that converges under a covered balcony at the front entry.

DO YOU KNOW WHERE THIS IS? _____

- CLUE 21:** Completed in 1911, this transportation hub was once considered the most beautiful building in Massachusetts. Its soaring 175’ high twin white marble towers and cream-colored exterior contribute to its distinctive character. After a closure and decades of disrepair, a \$32.2 million renovation revived the building. Reopening for us in 1999, it provides transportation services for commuters and travelers alike.

DO YOU KNOW WHERE THIS IS? _____

- CLUE 22:** With the appearance of a miniature castle, this 56’ high natural stone and granite tower was erected in 1900 in memory of George Bancroft on the top of one of Worcester’s “seven hills” and is listed on the National Register of Historic Places. The cost to build this beautiful tower back then? \$15,000.

DO YOU KNOW WHERE THIS IS? _____

- CLUE 23:** This fountain was initially commissioned to provide fresh water for people, horses and dogs. It includes a statue that has become a mascot for Worcester, its popularity derived mostly from its risqué misinterpretations. Designed by the same architect who designed the Lincoln Memorial in Washington, D.C., it was completed by two sculptors as the first committed suicide before completion. In 1970 it was stolen, and re-installed two years later.

DO YOU KNOW WHERE THIS IS? _____



HISTORY & CULTURE

Travel to the landmarks and immerse yourself in Worcester's past to present!



- CLUE 24:** Worcester's first monument to an individual African-American, this larger-than-life bronze statue depicts an Indiana native who lived most of his life in Worcester and was admired not only for his athletic prowess, but also his strength of character, fighting Jim Crow prejudice with remarkable dignity. Known as the "Worcester whirlwind," he held seven world records in his sport and won the world 1-mile championship in Montreal.

DO YOU KNOW WHERE THIS IS? _____

- CLUE 25:** Worcester is WICKED smart! With a population of just over 182,000 people and more than 36,000 students, one is hard pressed to find another city of comparable size with a greater concentration of world-class colleges and universities (we have nine). Whether you're a Clarkie or a Crusader, pick your favorite Worcester institute of higher education and snap a selfie in front of it!

DO YOU KNOW WHERE THIS IS? _____

Kids' car activity - Color in Main Street!

